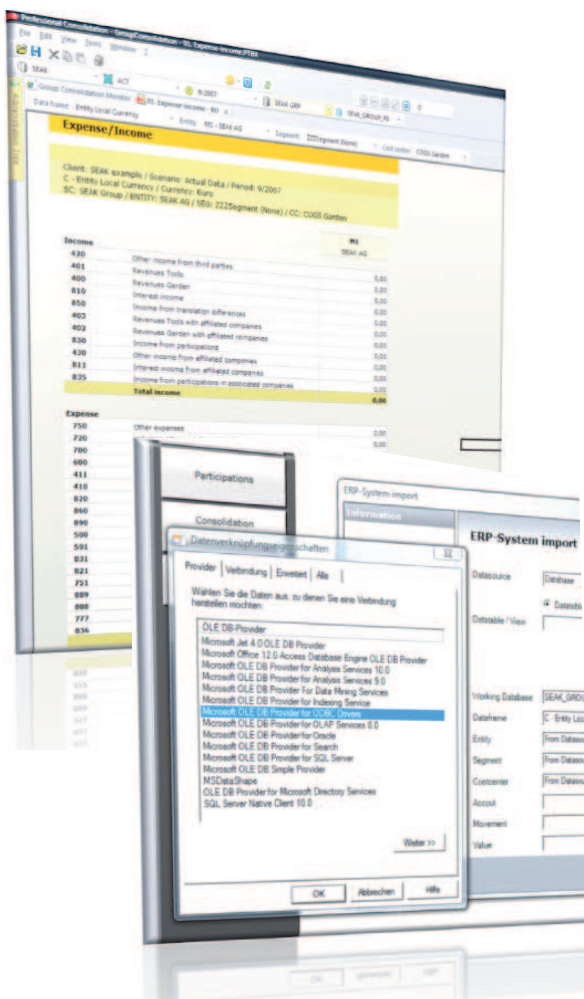




## Professional Consolidation 2010

Professional Consolidation helps you manage all processes required for the consolidation of data for internal and external reporting. Based on absolute transparency, highly complex consolidation processes are efficiently monitored and controlled. With Professional Consolidation, the consolidated financial statements become the central information tool – always up-to-date and available at any time. This software guarantees a high standard of security with a low financial burden.

## Functionalities and leading technology



### DATA IMPORT AND EXPORT

Data reliability and time-saving while data gathering

- Flexible data import and export including account mapping from all ERP back-office systems, data warehouse solutions, Excel packages
- Free, scalable and changeable data gathering
- Account mapping in the system (of local and standardized charts of accounts)

### DIMENSIONS

Highest possible flexibility and long-term reliability

- Accounts (local and standardized charts of accounts)
- Segments (for example, profit centers)
- Cost centers (for example, for the Cost of Sales Method)
- Movements for all balance sheet accounts
- Statistical breakdowns of all element types (numbers of employees, additional sub-divisions, for example, sales according to regions or customer groups)



**CURRENCY CONVERSION**

Accelerating the consolidation process – always up-to-date

- Requires no „initiation“ of currency conversion, each modification is immediately converted
- Automated process controlled through master data (for example, definition of historical balance conversion)
- Exchange rate entry (also for average exchange rate) – retrievable from the Internet (ECB)
- Currency switching in all documents
- Traceability of conversion differences
- No additional creation of reports
- Consistent support of transaction currency

**WORKFLOW**

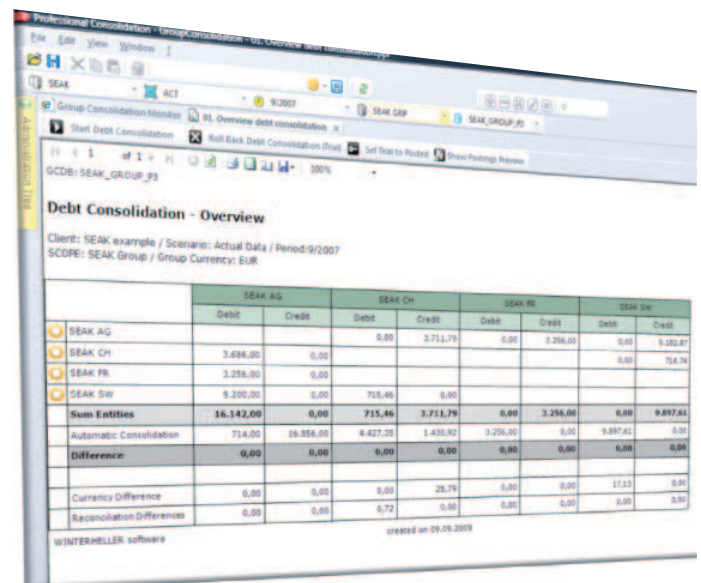
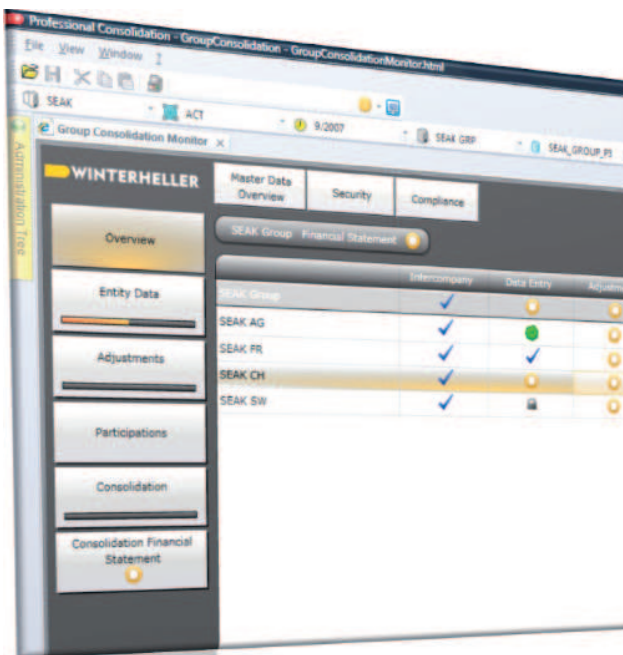
Nothing can be forgotten

- Role-based user concept
- Reconciliation of balances at entity level
- Multilevel approval procedure
- Automatic and individual test routines
- Overview of procedural progress using monitors

**ENTRIES**

Transparency increases trust in quality

- All adjustment entries and consolidation measures documented through vouchers and entries
- Differentiation between ‘pre’ entries (entry simulation) and ‘fixed’ entries (audit-proof)
- Quick variant check through entry simulation
- Free selection of vouchers and entries using filters
- Additional journals
- Audit-proof documentation and security of P/L carried forward





**CONSOLIDATION**

**Security through meeting legal consolidation requirements**

- Graphical participation tree
- Initial consolidation including gradual purchase
- Automatic subsequent consolidation
- Debt consolidation
- Expense and income consolidation
- Intercompany profit elimination
- Income from participating interests consolidation
- Deferred taxes
- Comprehensive reports and journals

**REPORTING**

**Quick use through prepared reports**

- Immediate use of reports – P/L according to Total Cost/Cost of Sales Method, wallpapers, depictions of movement schedule, etc.
- Drill-down, drill-through, report switching using structures
- Automatically calculated cash flow statement
- Has the flexibility to be extended and configured at all times

**TECHNOLOGY**

**Investment security through state-of-the-art technology**

- Real-time recalculations from annual financial statements I to group balance sheet
- Integrated tool to exchange data
- 64-bit architecture
- Unicode-compatible
- Windows 7-compatible
- Microsoft SQL Server 2008
- Microsoft Gold Partner

**RECOMMENDED SYSTEM REQUIREMENTS**

**Server system requirements**

*Operating systems*

- Microsoft Windows Server 2003 (x64)
- Microsoft Windows Server 2008 (x64) (recommended)

*Hardware*

- Processor: at least Quad Core
- Clock rate: at least 2.6 GHz
- Working memory: at least 16 GB RAM
- Hard disk system: 4x SAS hard disk (at least 4 disks for operational system, database log files, database data files and database temp files) – capacities depending on requirements between 100 GB and 1 TB
- Network interface card (GBit)

*Software*

- Database system: Microsoft SQL Server 2008 or R2
- Web browser: Microsoft Internet Explorer 7.x or higher
- Screen resolution: 1,280 x 1,024
- Component: Visual C++ runtime components (will be installed automatically)
- Component: .NET Framework 4 (will be installed automatically)
- Component: Silverlight Version 4

**Client system requirements**

*Operating systems*

- Microsoft Windows XP
- Microsoft Windows Vista
- Microsoft Windows 7 (recommended)

*Hardware*

- Processor: at least Dual Core
- Clock rate: at least 2.0 GHz
- Working memory: at least 4 GB RAM
- Available hard disk space: at least 20 GB

*Software*

- Web browser: Microsoft Internet Explorer 7.x or higher
- Screen resolution: 1,280 x 1,024
- Component: Visual C++ runtime components (will be installed automatically)
- Component: .NET Framework 4 (will be installed automatically)
- Component: Microsoft Report Viewer (will be installed automatically)
- Component: Silverlight Version 4

**About WINTERHELLER software and Corporate Performance Management**

Looking back on more than 20 years of experience, WINTERHELLER software is a leading provider of software solutions for Corporate Performance Management for medium-sized enterprises and groups.

WINTERHELLER is your reliable partner for fast, flexible and stable software tools, along with methodology and expertise. A partner whose number one priority is meeting your needs. We offer responsible solutions.

**Germany:**

WINTERHELLER software GmbH, Nymphenburger Straße 1, D-80335 Munich, Phone: +49/89/24 21 27-0, Fax: +49/89/24 21 27-18

**Austria:**

WINTERHELLER software GmbH, Radetzkystraße 6/5, A-8010 Graz Phone: +43/316/8010-0, Fax: +43/316/71 15 57

[www.winterheller.com](http://www.winterheller.com)

